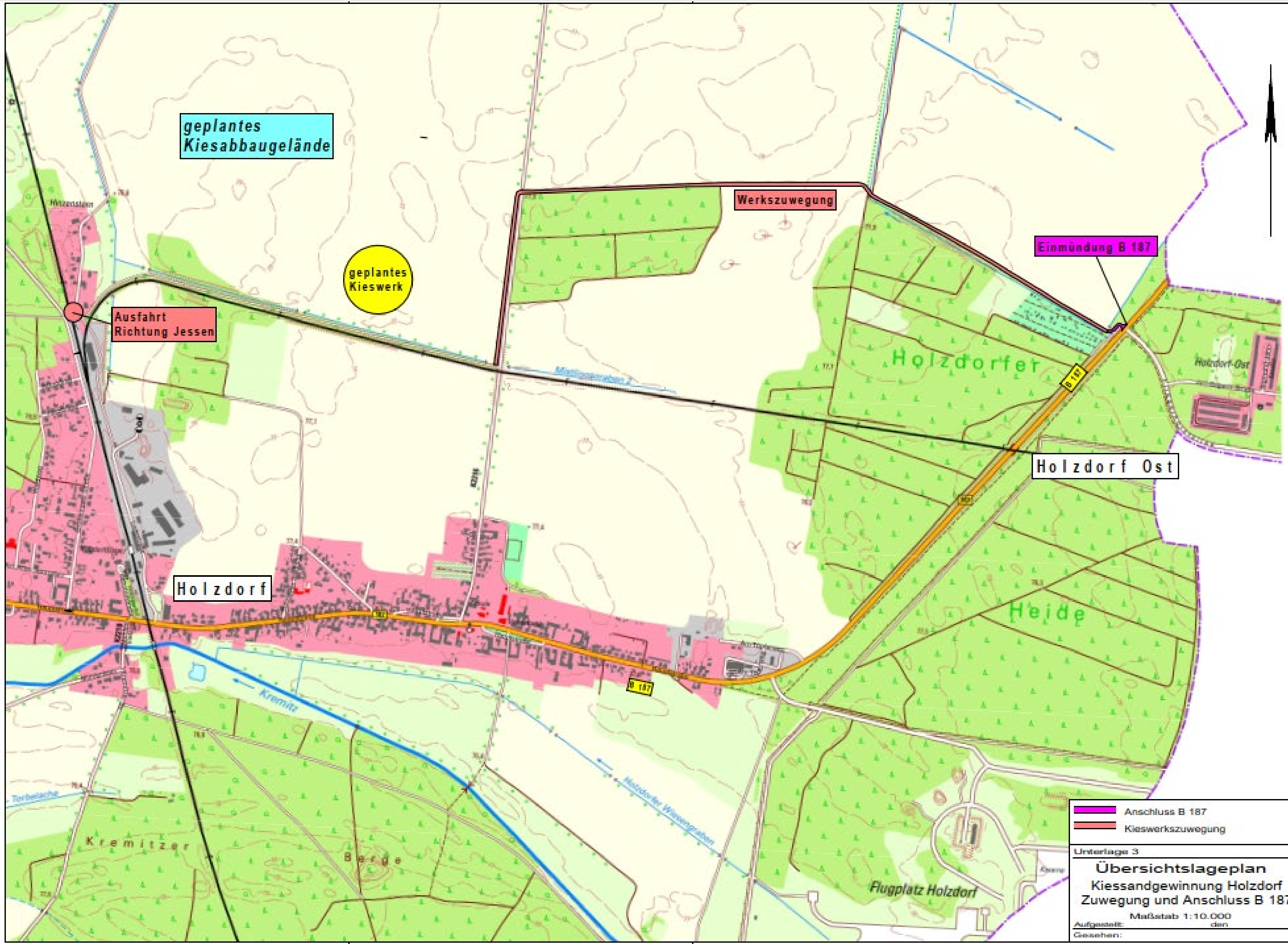


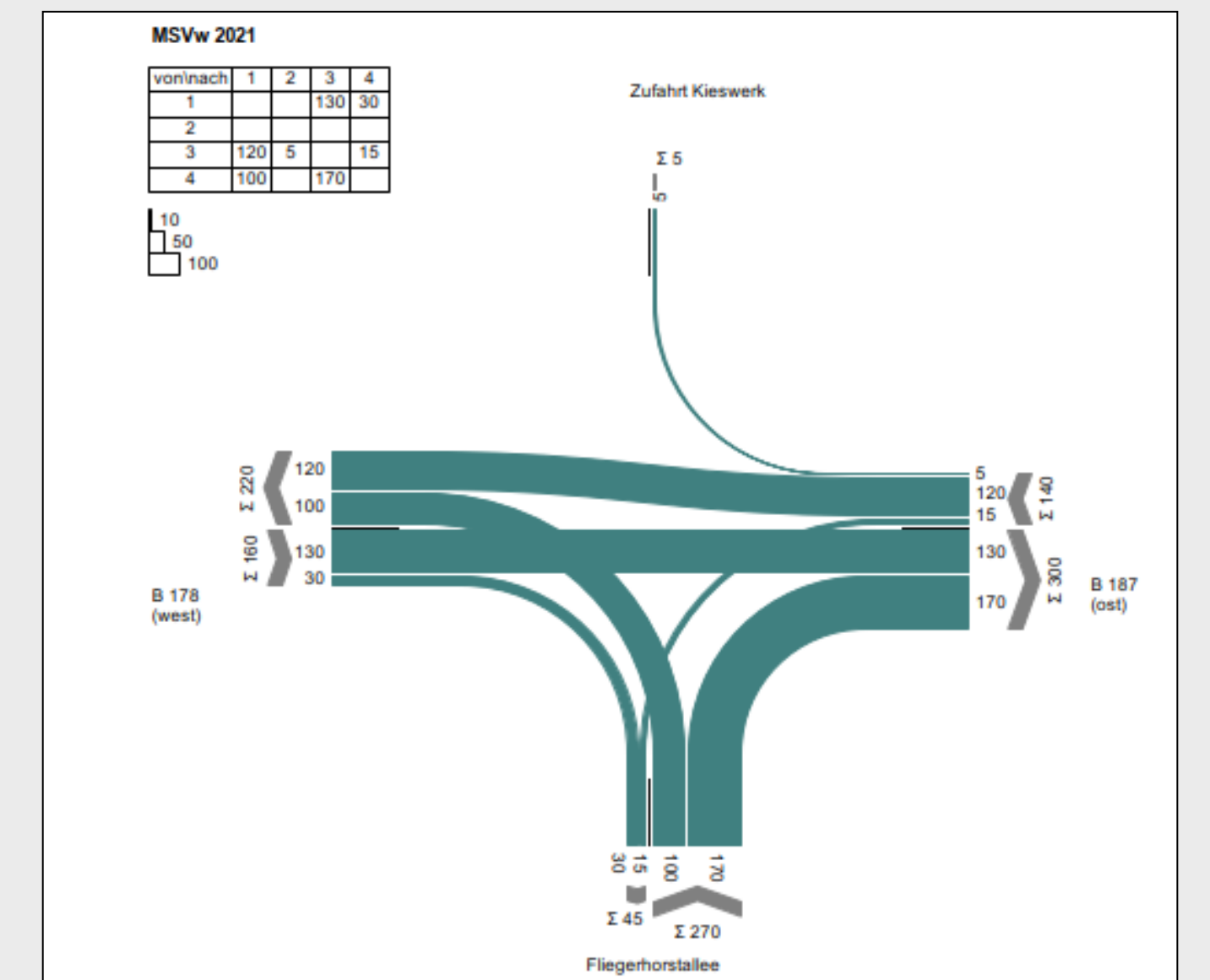
Straßenanbindung

Kiessandtagebau Holzdorf

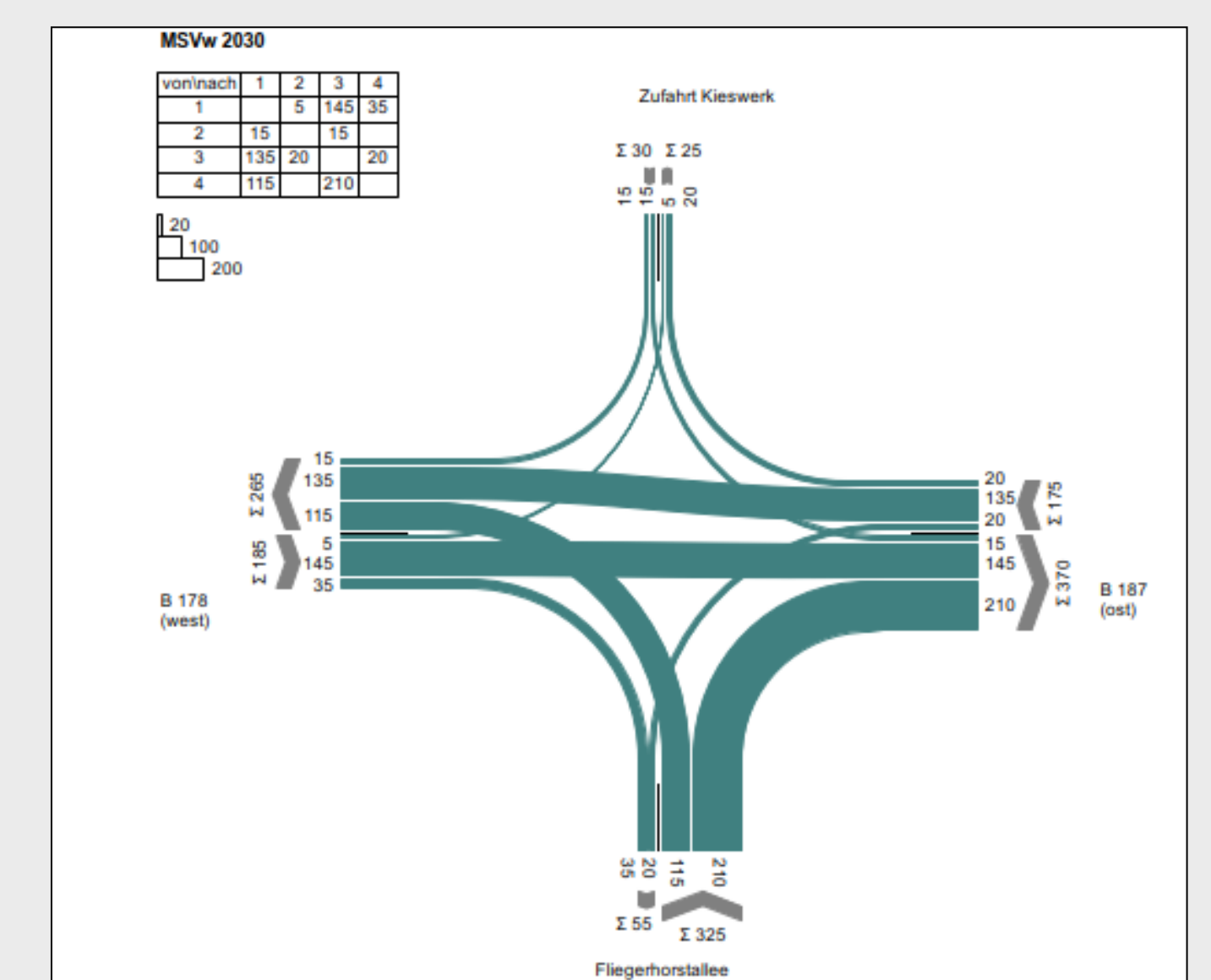


Übersichtslageplan: geplante Zuwegung

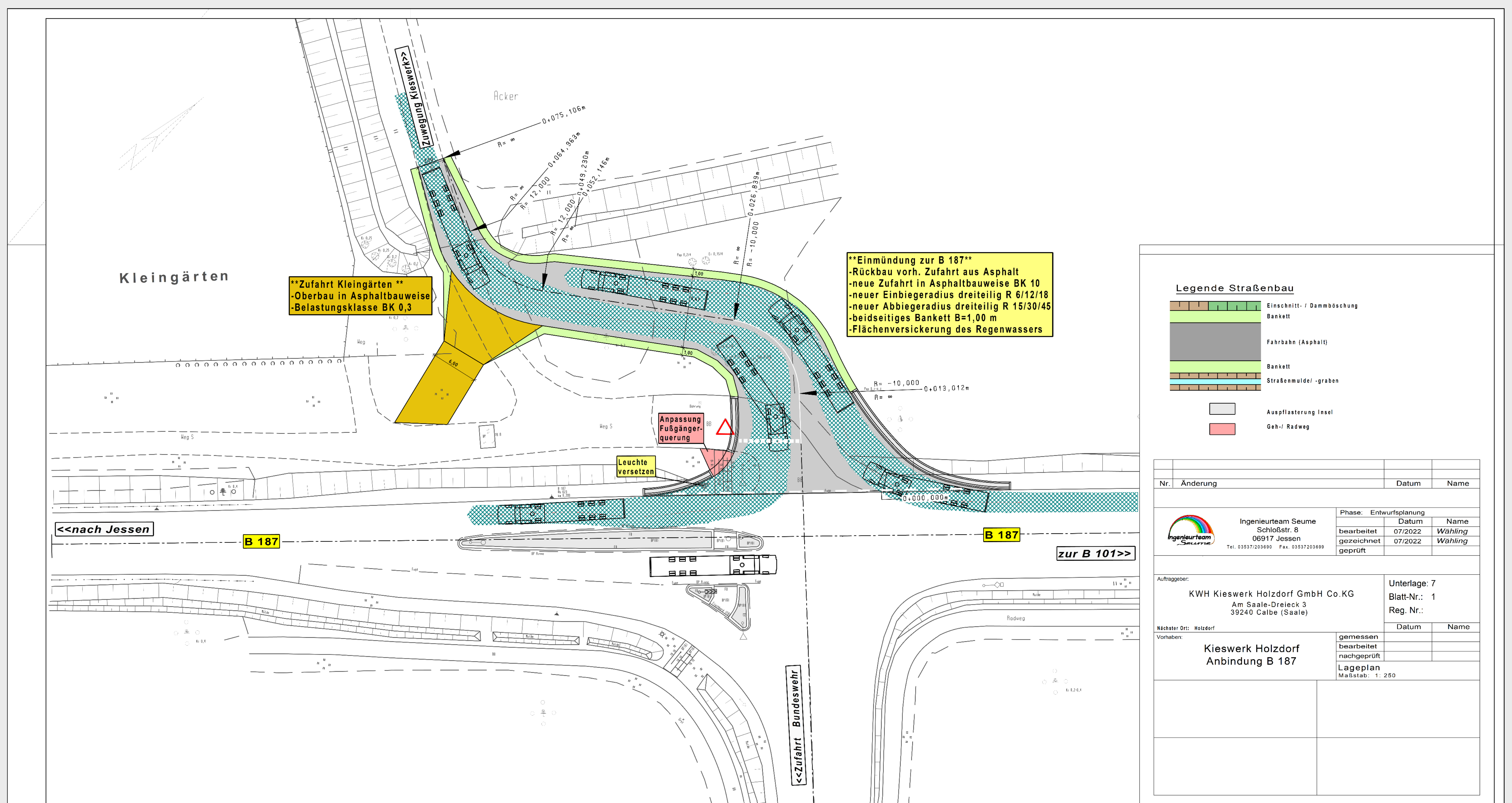
Stündliche Verkehrsstärke



Bestand 2021



Prognose 2030



Lageplan: Kreuzung B 187



Ingenieurteam Seume
Schloßstr. 8
06917 Jessen
Tel. 03537/203690 Fax. 03537/203699

