

# ENVIRONMENTAL PRODUCT DECLARATION

In accordance with ISO 14025 and EN 15804+A2



**SCHWENK Zement GmbH & Co. KG**  
**HRB E 4 - Bernburg - 0840-CPR-3040-036000-14**



**Owner of the declaration**

SCHWENK Zement GmbH & Co. KG  
Hindenburgring 15  
89077 Ulm  
Germany

**Product**

HRB E 4 - Bernburg - 0840-CPR-3040-036000-14

**Declared product / Declared unit**

1 t of HRB E 4 - Bernburg - 0840-CPR-3040-036000-14

**This declaration is based on Product Category Rules**

EN 15804:2012 + A2:2019,  
EN 16908:2017+A1:2022: Cement and building lime - Environmental product declarations - Product category rules complementary to EN 15804

**Program operator:**

EPD Norway  
Majorstuen P.O. Box 5250  
N-0303 Oslo  
Norway

**Declaration number**

NEPD-10106-10106-2

**Registration number**

NEPD-10106-10106-2

**Issue date**

16.04.2025

**Valid to**

15.04.2030

**EPD Software**

Emidat EPD Tool v1.0.0

## **General Information**

### **Product**

HRB E 4 - Bernburg - 0840-CPR-3040-036000-14

### **Program Operator**

EPD Norway  
Majorstuen P.O. Box 5250  
N-0303 Oslo  
Norway  
Phone: +47 23 08 80 00  
Email: post@epd-norge.no

### **Declaration Number**

NEPD-10106-10106-2

### **This declaration is based on Product Category Rules**

EN 15804:2012 + A2:2019,  
EN 16908:2017+A1:2022: Cement and building lime -  
Environmental product declarations - Product category  
rules complementary to EN 15804

### **Statements**

The owner of the declaration shall be liable for the  
underlying information and evidence. EPD Norway shall  
not be liable with respect to manufacturer, life cycle  
assessment data and evidences.

### **Declared unit**

1 t of HRB E 4 - Bernburg - 0840-CPR-3040-036000-14

### **General information on verification of EPD from EPD tools**

Independent verification of data, other environmental  
information and the declaration according to ISO  
14025:2010, § 8.1.3 and § 8.1.4. Verification of each EPD  
is made according to EPD Norway's guidelines for  
verification and approval requiring that tools are i)  
integrated into the company's environmental  
management system, ii) the procedures for use of the  
EPD tool are approved by EPD-Norway, and iii) the  
process is reviewed annually by an independent third  
party verifier. See Appendix G of EPD-Norway's General  
Programme Instructions for further information on EPD  
tools.

### **Verification of EPD tool**

Charlotte Merlin, FORCE Technology  
(no signature required)

### **Owner of the declaration**

SCHWENK Zement GmbH & Co. KG

### **Contact person**

info@schwenk.de

### **Phone**

+497319341-0

### **Email**

info@schwenk.de

### **Manufacturer**

SCHWENK Zement GmbH & Co. KG  
Hindenburgring 15  
89077 Ulm, Germany

### **Place of production**

Bernburg, Germany

### **Management system**

ISO 9001, ISO 14001, ISO 50001

### **Organisation no**

Registereintragung: HRA 1955, Amtsgericht Ulm

### **Issue date**

16.04.2025

### **Valid to**

15.04.2030

### **Year of study**

2023

### **Comparability**

EPDs of construction products may not be comparable if  
they do not comply with EN 15804 and are not seen in a  
building context. EPD data may not be comparable if the  
datasets used are not developed in accordance with EN  
15804 and if the background systems are not based on  
the same database (including primary and secondary  
data).

### **Development and verification of EPD**

The declaration was created using the Emidat EPD tool  
v1.0, developed by Emidat GmbH. The EPD tool has been  
approved by EPD Norway.

Developer of EPD: Dr. Klaus Raiber

Reviewer of company-specific input data and EPD:  
Thomas Arndt

### **Approved**



Håkon Hauan, CEO EPD-Norge

## Product

### Product description

The hydraulic road binder HRB E 4 is a high-performance binder specifically designed for use in road construction. It is composed of finely ground, non-metallic, and inorganic components. When water is added, a suspension (cement paste) is formed, which solidifies and hardens both in air and underwater due to the hydration reaction. The composition of the product complies with the specifications of EN 13282-1.



HRB E 4 can be used in all traffic route construction for base courses of the superstructure (hydraulically bound base courses, HGT for short, as well as for soil stabilisation and soil improvement of the subsoil or substructure. It can also be used for the production of rolled concrete surfaces. HRB E 4 improves the compaction capacity and increases the load-bearing capacity and resistance of soils or building material mixtures against physical and chemical attacks. The leachability of pollutants can be reduced.

### Product specification

Name of ingredient	Share of total weight	Country of origin
Additives	0 - 6 %	Germany
Admixtures	0 - 6 %	Germany
Clinker	65 - 80 %	Germany
Gypsum	0 - 6 %	Germany
Natural aggregates	6 - 20 %	Germany

### Technical data

	Unit	Value
Compressive Strength (Prisms, EN 196-1)	N / mm <sup>2</sup>	32.5
Density	kg / m <sup>3</sup>	2800.0

### Market

Germany

### Reference service life

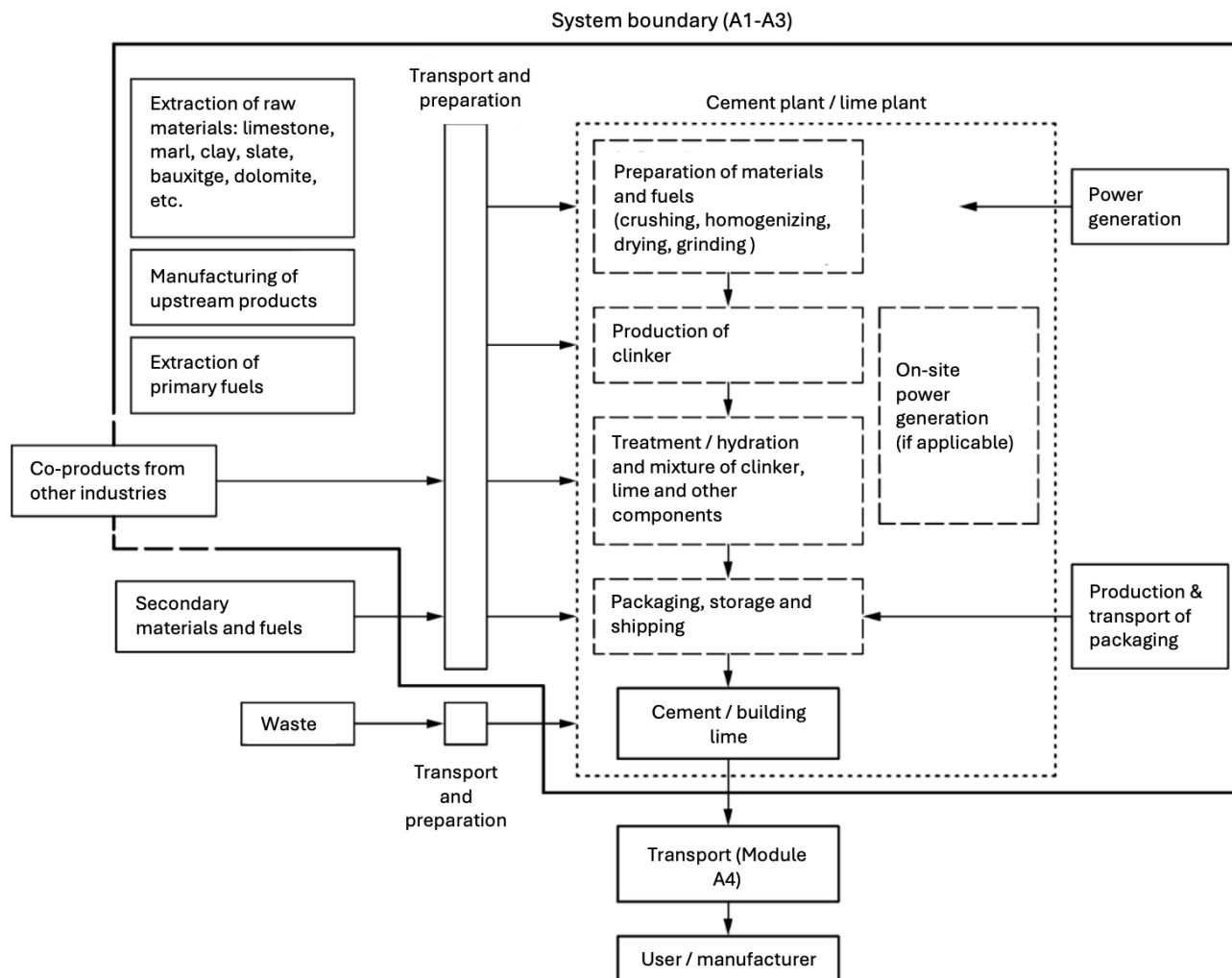
This study does not cover the use stage. Thus, the reference service life is irrelevant.

## LCA: Calculation rules

### Declared unit

1 t of HRB E 4 - Bernburg - 0840-CPR-3040-036000-14

### System boundary



### Data quality

The Emidat EPD Tool v1.0.0 was used for LCA modeling and calculation. Background data was used from ecoinvent database v3.10.

System boundaries (X=included, MND=module not declared)

	Production			Installation		Use stage							End-of-Life				Next product system
	Raw material supply	Transport	Manufacturing	Transport	Installation Process	Use	Maintenance	Repair	Replacement	Refurbishment	Operational Energy Use	Operational Water Use	Demolition	Transport	Waste Processing	Disposal	Benefits and loads beyond the system boundary
Module	A1	A2	A3	A4	A5	B1	B2	B3	B4	B5	B6	B7	C1	C2	C3	C4	D
Modules declared	x	x	x	MND	MND	MND	MND	MND	MND	MND	MND	MND	MND	MND	MND	MND	MND
Geography			DE	MND	MND	MND	MND	MND	MND	MND	MND	MND	MND	MND	MND	MND	MND

For the geographies modeled in A1 and A2, refer to *Product specification*.

Type of EPD: cradle to gate (A1-A3)

#### Stage of Material Production and Construction

Module A1: Extraction and processing of cement raw materials

Module A2: Transportation of raw materials to the cement plant

Module A3: Cement production at the plant and waste treatment

#### Cut-off criteria

No cut-offs were applied.

#### Allocation

Elementary flows (energy and fuels, ancillary materials and waste) data was collected on production-process-level. Using the total output of the production process in 2023, elementary flows are assigned to 1 declared unit based on mass.

## LCA: Results

### Core environmental impact indicators

Indicator	Unit	A1-3
GWP-total	kg CO <sub>2</sub> -eq.	6.22e+02 (4.40e+02)*
GWP-fossil	kg CO <sub>2</sub> -eq.	5.51e+02 (4.37e+02)*
GWP-biogenic	kg CO <sub>2</sub> -eq.	7.13e+01 (3.12e+00)*
GWP-luluc	kg CO <sub>2</sub> -eq.	6.17e-02
ODP	kg CFC-11-Eq	3.78e-07
AP	mol H+-Eq	8.27e-01
EP-freshwater	kg P-Eq	7.79e-02
EP-marine	kg N-Eq	2.13e-01
EP-terrestrial	mol N-Eq	2.42e+00
POCP	kg NMVOC-Eq	6.15e-01
ADPE	kg Sb-Eq	1.70e-03
ADPF	MJ, net calorific value	2.42e+03
WDP	m <sup>3</sup> world Eq deprived	9.39e+00

**GWP-total:** Global Warming Potential - total **GWP-fossil:** Global warming potential - fossil **GWP-biogenic:** Global Warming Potential - biogenic **GWP-luluc:** Global Warming Potential - luluc **ODP:** Depletion potential of the stratospheric ozone layer **AP:** Acidification potential, Accumulated Exceedance **EP-freshwater:** Eutrophication potential - freshwater **EP-marine:** Eutrophication potential - marine **EP-terrestrial:** Eutrophication potential - terrestrial **POCP:** Photochemical Ozone Creation Potential **ADPE:** Abiotic depletion potential - non-fossil resources **ADPF:** Abiotic depletion potential - fossil resources **WDP:** Water (user) deprivation potential

\* The first value is the gross value, it includes the impacts from all manufacturing activities. Gross values are more commonly used in Northern Europe. The value in brackets is the net value, it excludes the impact from the incineration of waste-derived fuels, and is more common in Central Europe and Germany.

### Additional indicators

Indicator	Unit	A1-3
PM	disease incidence	8.44e-06
IRP	kBq U235-Eq	7.44e+00
ETP-fw	CTUe	2.11e+02
HTP-c	CTUh	1.13e-07
HTP-nc	CTUh	2.92e-06
SQP	dimensionless	1.22e+02

**PM:** Potential incidence of disease due to PM emissions **IRP:** Potential Human exposure efficiency relative to U235 **ETP-fw:** Potential Comparative Toxic Unit for ecosystems **HTP-c:** Potential Comparative Toxic Unit for humans - cancer effects **HTP-nc:** Potential Comparative Toxic Unit for humans - non-cancer effects **SQP:** Potential Soil quality index

**IRP:** This impact category deals mainly with the eventual impact of low dose ionizing radiation on human health of the nuclear fuel cycle. It does not consider effects due to possible nuclear accidents, occupational exposure nor due to radioactive waste disposal in underground facilities. Potential ionizing radiation from the soil, from radon and from some construction materials is also not measured by this indicator.

**ETP-fw, HTP-c, HTP-nc and SQP:** The results of these environmental impact indicators shall be used with care as the uncertainties on these results are high or as there is limited experienced with these indicators.

## Use of resources

Indicator	Unit	A1-3
PERE	MJ	7.80e+02
PERM	MJ	0
PERT	MJ	7.80e+02
PENRE	MJ	2.42e+03
PENRM	MJ	1.45e+00
PENRT	MJ	2.42e+03
SM	kg	0
RSF	MJ	5.20e+02
NRSF	MJ	7.96e+02
FW	m <sup>3</sup>	3.12e-01

**PERE:** Primary energy resources - renewable: use as energy carrier **PERM:** Primary energy resources - renewable: used as raw materials **PERT:** Primary energy resources - renewable: total **PENRE:** Primary energy resources - non-renewable: use as energy carrier **PENRM:** Primary energy resources - non-renewable: used as raw materials **PENRT:** Primary energy resources - non-renewable: total **SM:** Use of secondary material **RSF:** Renewable secondary fuels **NRSF:** Non-renewable secondary fuels **FW:** Net use of fresh water

## Waste flows

Indicator	Unit	A1-3
HWD	kg	1.36e+00
NHWD	kg	3.79e+02
RWD	kg	2.18e-03

**HWD:** Hazardous waste disposed **NHWD:** Non hazardous waste disposed **RWD:** Radioactive waste disposed

## Output flows

Indicator	Unit	A1-3
CRU	kg	0
MFR	kg	0
MER	kg	0
EEE	MJ	0
EET	MJ	0

**CRU:** Components for re-use **MFR:** Materials for recycling **MER:** Materials for energy recovery **EEE:** Exported electrical energy **EET:** Exported thermal energy

Name	Value	Unit
Biogenic carbon content in product	0	kg C
Biogenic carbon content in accompanying packaging	0	kg C

## Additional requirements

### Greenhouse gas emissions from the use of electricity in the manufacturing phase

Electricity consumption in the manufacturing phase is composed from the source below. Electricity is represented by data in ecoinvent 3.10 regionalised for Germany.

Electricity	Unit	Value
Electricity from grid	kg CO <sub>2</sub> -eq. / kWh	0.47

### Dangerous substances

The product contains no substances given by the REACH candidate list.

## Additional environmental information

### Additional environmental impact indicators required in NPCR Part A for construction products







Indicator	Unit	A1-3
GWP-IOBC	kg CO <sub>2</sub> -eq.	4.02e+02

**GWP-IOBC:** Global Warming Potential - Instantaneous oxidation of biogenic carbon



## Bibliography

DIN EN ISO 14025:2011-10	Environmental labels and declarations - Type III environmental declarations - Principles and procedures
DIN EN ISO 14040:2021-02	Environmental management - Life cycle assessment - Principles and framework
DIN EN ISO 14044:2021-02	Environmental management - Life cycle assessment - Requirements and guidelines
EN 15804:2012+A2:2019	Sustainability of construction works - Environmental product declarations - Core rules for the product category of construction products
DIN CENTR 15941:2010-11	Sustainability of construction works - Environmental product declarations - Methodology for selection and use of generic data
DIN EN 15942:2022-04	Sustainability of construction works - Environmental product declarations - Communication format business-to-business
ISO 21930:2017-07	Sustainability in buildings and civil engineering works - Core rules for environmental product declarations of construction products and services
Ecoinvent v3.10	ecoinvent, Zurich, Switzerland, database version 3.10
PCR	EN 16908:2017+A1:2022: Cement and building lime - Environmental product declarations - Product category rules complementary to EN 15804
EN 16908:2017+A1:2022	Cement and building lime - Environmental product declarations - Product category rules complementary to EN 15804
	Basic principles and recommendations for describing the dismantling, post use, and disposal stage of construction products: <a href="https://www.umweltbundesamt.de/sites/default/files/medien/1410/publikationen/2020-07-06_texte_130-2020_guidance-document-construction-industry.pdf">https://www.umweltbundesamt.de/sites/default/files/medien/1410/publikationen/2020-07-06_texte_130-2020_guidance-document-construction-industry.pdf</a>
	ILCD Handbook: <a href="https://eplca.jrc.ec.europa.eu/uploads/ILCD-Handbook-LCIA-Background-analysis-online-12March2010.pdf">https://eplca.jrc.ec.europa.eu/uploads/ILCD-Handbook-LCIA-Background-analysis-online-12March2010.pdf</a>

	<b>Program Operator</b>	Phone	+47 23 08 80 00
	EPD Norway Majorstuen P.O. Box 5250, N-0303 Oslo Norway	Email	post@epd-norge.no
	<b>Publisher</b>	Web	www.epd-norge.no
	The Norwegian EPD Foundation Post Box 5250 Majorstuen, 0303 Oslo Norway	Phone	+47 23 08 80 00
	<b>Owner of the declaration</b>	Email	post@epd-norge.no
	SCHWENK Zement GmbH & Co. KG Hindenburggring 15, 89077 Ulm Germany	Web	www.epd-norge.no
	<b>Author of the life cycle assesment</b>	Phone	+497319341-0
	SCHWENK Zement GmbH & Co. KG Hindenburggring 15, 89077 Ulm Germany	Email	info@schwenk.de
		Web	<a href="https://www.schwenk.de">https://www.schwenk.de</a>
	ECO Platform ECO Portal	Web	<a href="http://www.eco-platform.org">www.eco-platform.org</a>
	<b>Developer of EPD generator</b>	Web	<a href="http://www.eco-portal">ECO Portal</a>
	Emidat GmbH Sandstraße 33, 80335 München Germany	Phone	+49 176 56 96 77 91
		Email	epd@emidat.com
		Web	www.emidat.com